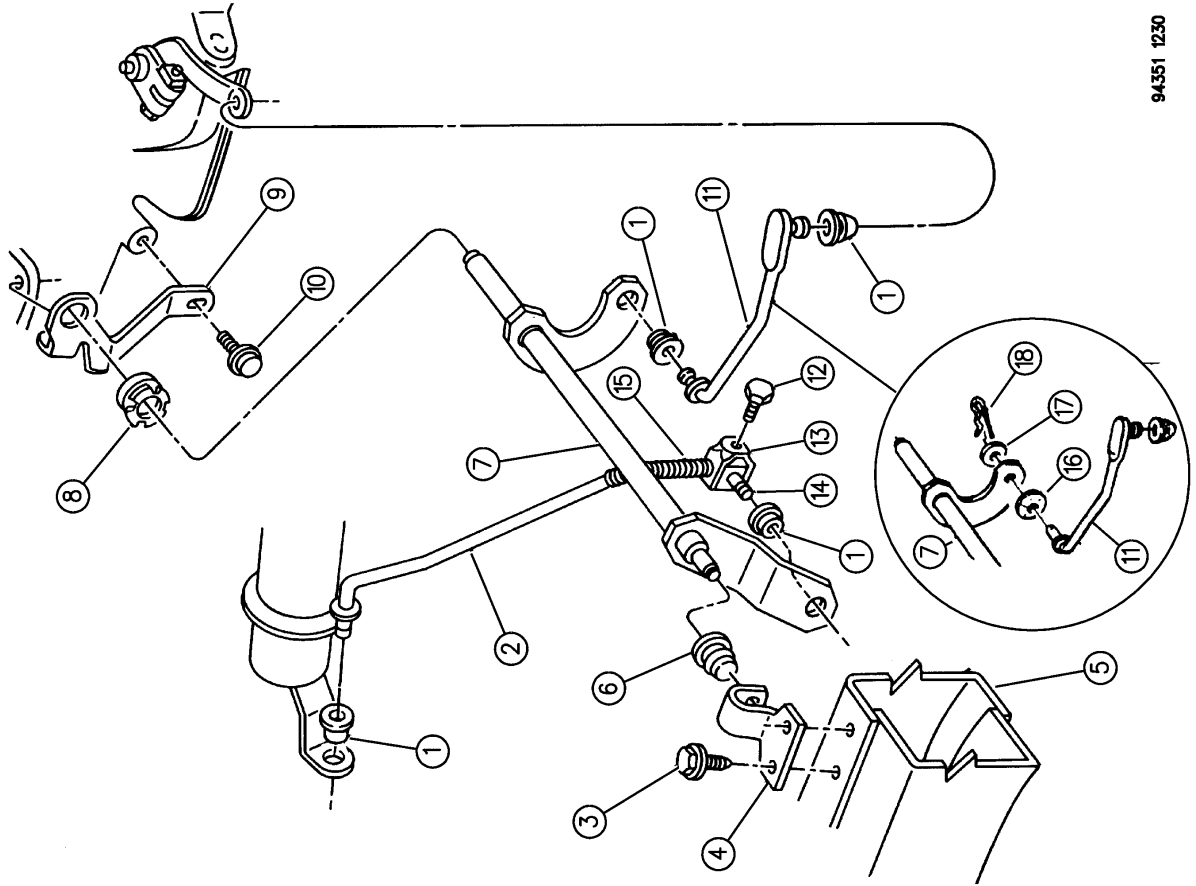


CONTROLS, GEARSHIFT, LOWER AUTOMATIC TRANSMISSION, 4 SPEED, 46RH N BODY
Figure 21D-1230

21D-1230



ITEM	PART NUMBER	QTY	BODY	MODEL	DESCRIPTION
1	3575 333	3			GROMMET, Rod To Strg. Column & T/Shaft Lever
2	4446 821	1			ROD ASSEMBLY, G/Shift Control, Front
3		2			SCREW, Bracket (Not Serviced)
4	4348 518	1			BRACKET, Torque Shaft Frame
5		1			FRAME ASSEMBLY, (Reference)
6	5211 845	1			GROMMET, Torque Shaft Frame Bracket
7	5207 8036	1			TORQUE SHAFT, Gearshift Control
8	3575 434	1			BUSHING, Torque Shaft, Trans. End
9	5300 9341	1			BRACKET, Torque Shaft, Trans. End
10	0181 088	1			SCREW, Bracket, 5/16-18 x 1"
11	5207 8038	1			ROD, Rear
12	0181 086	1			SCREW, Clamp Adjusting, 5/16-18 x 3/4"
13	4443 412	1			CLAMP PACKAGE, w/Screw, Control Rod Swivel
14	3575 334	1			SWIVEL, Control Rod Clamp
15	3575 354	1			SPRING, Control Rod Adjusting
16	0391 888	1			WASHER, Spring
17	J012 0393	1			WASHER, Flat
18	J400 4295	1			PIN, Rod To T/Shaft Lever

MODEL CODES:
 N1 = MID SIZE PICK-UP (4x2)
 N5 = MID SIZE PICK-UP (4x4)
 B1,2,3 = VANS AND WAGONS (4x2)
 R6,7,8 = (T300) CONVENTIONAL TRUCK (4x2)
 R1,2,3 = (T300) CONVENTIONAL TRUCK (4x4)

BODY STYLE & WHEELBASE:
 VANS
 (11) = 109" W.B. (51) = 109" W.B.
 (12) = 127" W.B. (52) = 127" W.B.
 (13) = 127X" W.B. (53) = 127X" W.B.

WAGONS
 (61) = 116.7" W.B.
 (62) = 134.7" W.B.
 (63) = 138.7" W.B. Cab & Chassis)
 (64) = 162.7" W.B. Cab & Chassis)

CONVENTIONAL-BR
 (31) = 138.7" W.B. (Club Cab)
 (32) = 154.7" W.B. (Club Cab)

N-TRUCK
 (31) = 130.9" W.B. (Club Cab)
 (61) = 111.9" W.B.
 (62) = 123.9" W.B.

94351 1230

AR = Use as Required - = Non Illustrated Part. P.A.R. = Paint as Required