

**COLUMN, STEERING UPPER AND LOWER N-BODY**  
**Figure 19-220**

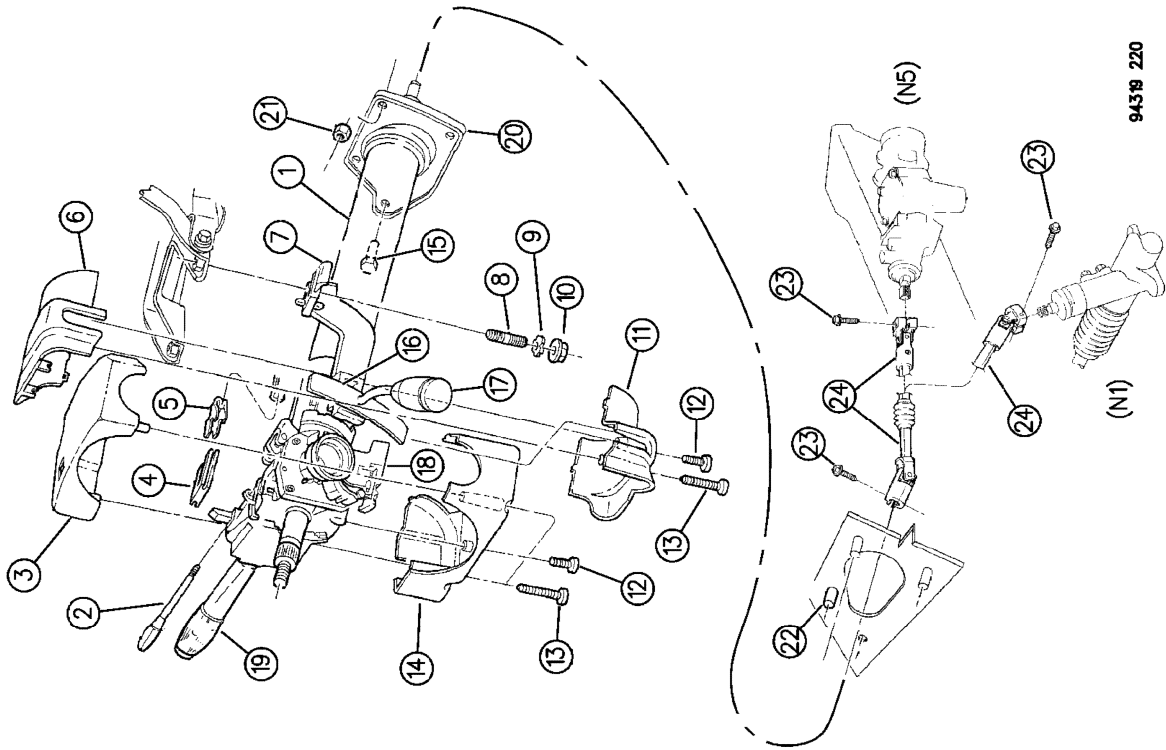
19-220

ITEM	PART NUMBER	QTY	BODY	MODEL	DESCRIPTION
1	4746 118	1			COLUMN, Assy.
	4797 432	1			w/Tilt, w/Column Shift 1994
	4773 646	1			w/Tilt, w/Column Shift 1995-96
	4797 435	1			w/Tilt, w/Floor Shift 1994
	4798 172	1			w/Tilt, w/Floor Shift 1995
	4773 647	1			w/o Tilt, w/Column Shift 1994
	4797 434	1			w/o Tilt, w/Column Shift 1995-96
	4773 649	1			w/o Tilt, w/Floor Shift 1994
	4797 436	1			w/o Tilt, w/Floor Shift 1995
	4798 173	1			w/o Tilt, w/Floor Shift 1996
2	4470 103	1			LEVER, Tilt
-	4326 965	1			ARM, PRNDL Indicator Actuating
3					SHROUD, Upper Lock Housing (P.A.R.)
	4636 190	1			w/Tilt, (Serv. Pkg.)
	4636 181	1			w/o Tilt, (Serv. Pkg.)
4	4147 217	1			SPACER
5	5274 178	1			CLIP
6	DL54 JV8	1			SHROUD, Upper Fixed (P.A.R.)
	BA65 KV8	1			w/Auto Trans.
	3748 492	1			w/Man. Trans.
7					SPACER
8		2			STUD, (Not Serv.)
9		2			WASHER, (Not Serv.)
10	6027 403	2			NUT
11					SHROUD, Lower Fixed (P.A.R.)
	DL53 JC5	1			w/Auto Trans.
	BA67 KV8	1			w/Man. Trans.
12		2			SCREW, (Not Serv.)
13	4470 105	3			SCREW
14					SHROUD, Lower Lock Housing (P.A.R.)
	4636 190	1			w/Tilt, (Serv. Pkg.)
	4636 181	1			w/o Tilt, (Serv. Pkg.)
15	0181 088	3			SCREW, w/Washer
16	4470 108	1			HIDER, Gap ***
17	4326 824	1			LEVER, Pkg.
18		1			SWITCH, Ing. (See Grp. 8)
19		1			SWITCH, Multifunction (See Grp. 8)
20	5207 8393	1			PLATE, w/Seal
21	0118 614	3			NUT, w/Washer
22	6032 878	3			STUD

**MODEL CODES:**  
 N1 = MID SIZE PICK-UP (4x2)  
 N5 = MID SIZE PICK-UP (4x4)  
 B1,2,3 = VANS AND WAGONS (4x2)  
 R1,2,3 = (T300) CONVENTIONAL TRUCK (4x2)  
 R6,7,8 = (T300) CONVENTIONAL TRUCK (4x4)

**BODY STYLE & WHEELBASE:**  
 VANS  
 (11) = 109" W.B. (51) = 109" W.B.  
 (12) = 127" W.B. (52) = 127" W.B.  
 (13) = 127X" W.B. (53) = 127X" W.B.  
 WAGONS  
 (61) = 116.7" W.B.  
 (62) = 134.7" W.B.  
 (63) = 138.7" W.B. Cab & Chassis)  
 (64) = 162.7" W.B. Cab & Chassis)  
 (31) = 138.7" W.B. (Club Cab)  
 (32) = 154.7" W.B. (Club Cab)

**CONVENTIONAL-BR**  
 N-TRUCK  
 (31) = 130.9" W.B. (Club Cab)  
 (61) = 111.9" W.B.  
 (62) = 123.9" W.B.



94318 220

AR = Use as Required \* = Non Illustrated Part P.A.R. = Paint as Required