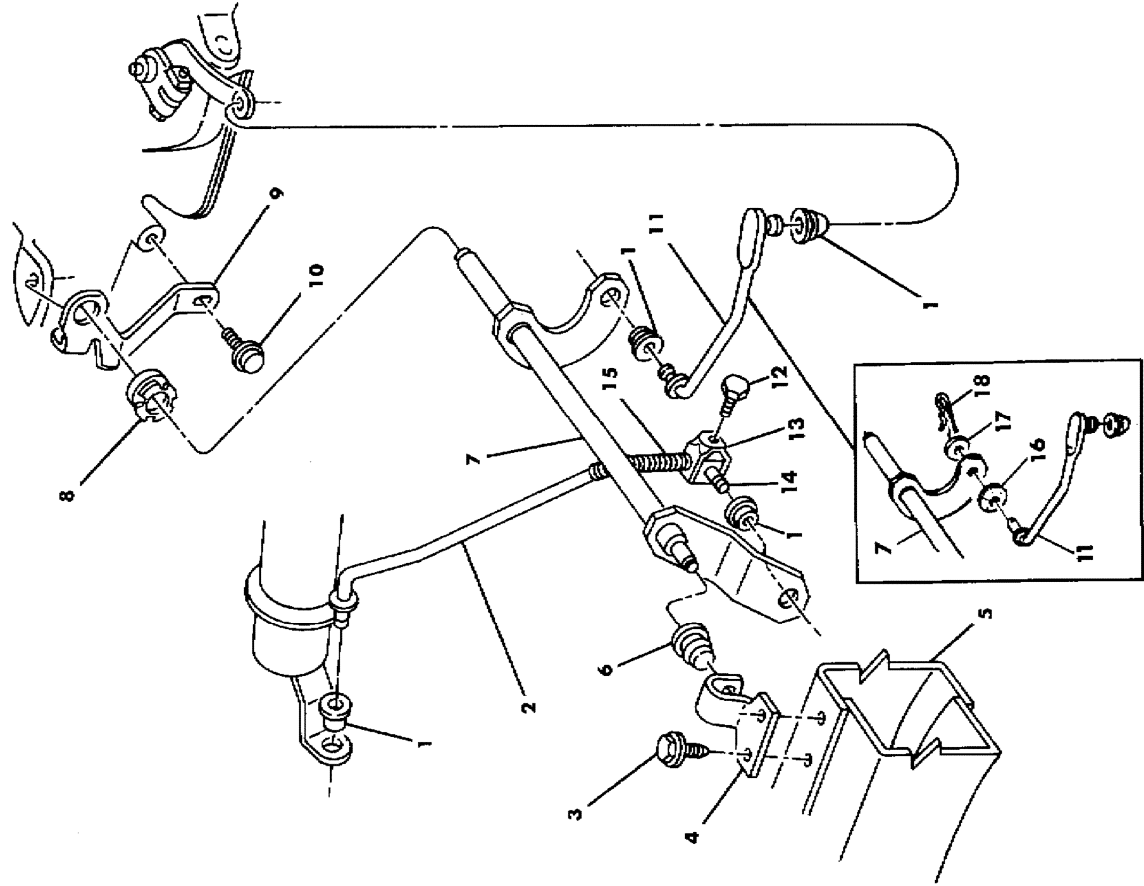


CONTROLS, GEARSHIFT, LOWER AUTOMATIC TRANSMISSION, A998,A500,A518 N BODY
Figure 21A-3600

90351 3600A



ITEM	PART NUMBER	QTY	BODY	MODEL	DESCRIPTION
1	3575 333	4			GROMMET, Rod To Strg. Column & T/Shaft Lever, 1990-91
	3575 333	3			1992-93
2	4446 821	1			ROD ASSEMBLY, G/Shift Control, Front
3	4348 518	2			SCREW, Bracket (Not Serviced)
4	4348 518	1			BRACKET, Torque Shaft Frame
5		1			FRAME ASSEMBLY, (Reference)
6	5211 845	1			GROMMET, Torque Shaft Frame Bracket
7	4329 719	1			TORQUE SHAFT, Gearshift Control, 1990-91
	5207 8036	1			1992-93
8	3575 434	1			BUSHING, Torque Shaft, Trans. End
9	4329 722	1			BRACKET, Torque Shaft, Trans. End, 1990-91
	5207 7752	1			w/A500 Trans., 1992-93
	5300 9341	1			w/A518 Trans., 1992-93
10	0181 088	1			SCREW, Bracket, 5/16-18 x 1"
11	4329 720	1			ROD, Rear, 1990-91
	5207 8038	1			1992-93
12	0181 086	1			SCREW, Clamp Adjusting, 5/16-18 x 3/4"
13	4443 412	1			CLAMP PACKAGE, w/Screw, Control Rod Swivel
14	3575 334	1			SWIVEL, Control Rod Clamp
15	3575 354	1			SPRING, Control Rod Adjusting
16	0391 888	1			WASHER, Spring, 1992-93
17	0120 393	1			WASHER, Flat, 1992-93
18	J400 4295	1			PIN, Rod To T/Shaft Lever, 1992-93

MODEL CODES:
TRUCK LINE
 D4 = SPORT UTILITY (4x2)
 D5,6,7 = CONVENTIONAL TRUCK (4x4)
 N5 = MID SIZE PICK-UP (4x4)
 D1,2,3 = CONVENTIONAL TRUCK (4x2)
 B1,2,3 = VANS AND WAGONS (4x2)
 T = FRONT SECTION (4x2)

BODY STYLE
WHEELBASE:
 VANS
 (11) = 109" W.B.
 (12) = 127" W.B.
 (13) = 127X" W.B.
FRT SECT
 (02) = 127" W.B.
 (04) = 145" W.B.
 (05) = 163" W.B.
CONVENTIONAL
 (61) = 115" W.B.(D/W) (61) = 111,9" W.B.(N)
 (62) = 131" W.B.(D/W) (62) = 123,9" W.B.(N)
 (63) = 135" W.B.
 (64) = 159" W.B.
 (31) = 130,9" W.B.

SPORT UTILITY
 CLUB CAB
 (31) = D1
 (32) = D1,D2,D5,D6

AR = Use as Required * = Non Illustrated Part P.A.R. = Paint as Required