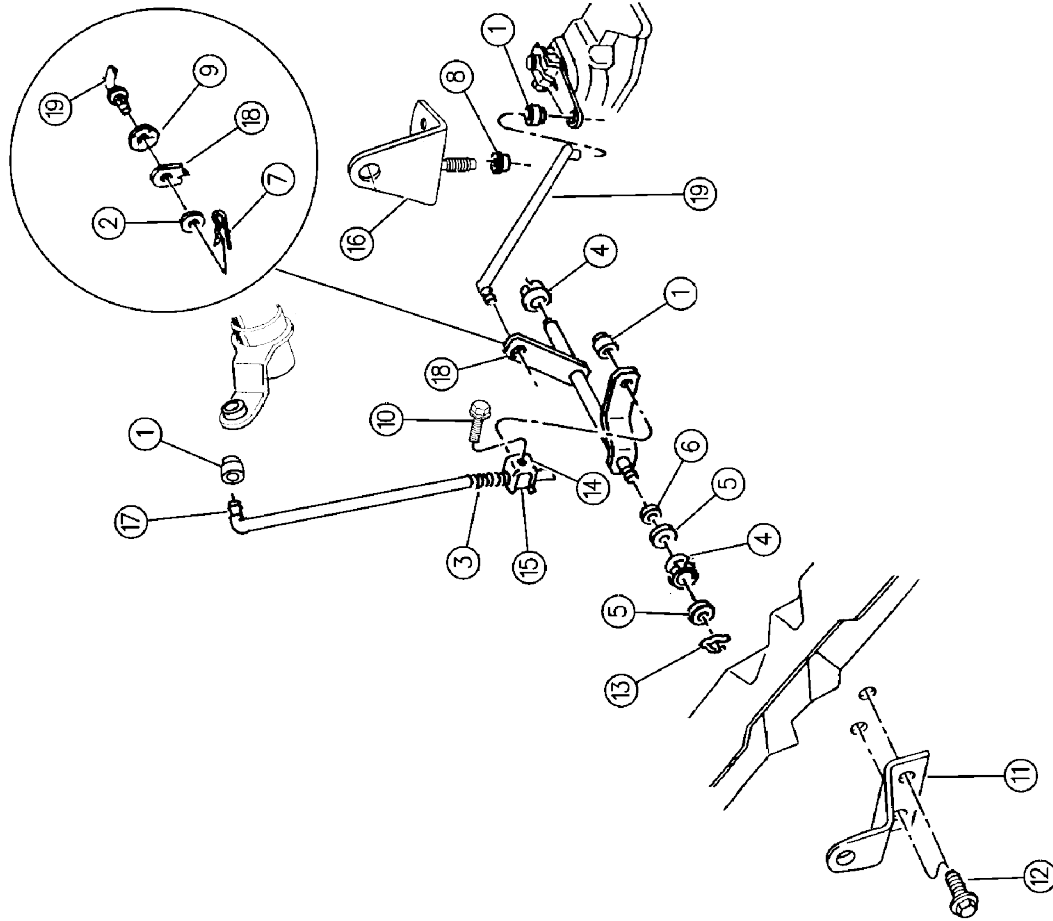


**CONTROLS, GEARSHIFT, LOWER AUTOMATIC TRANSMISSION, 4 SPEED, 46RE R BODY**  
**Figure 21J-1250**

21J-1250

ITEM	PART NUMBER	QTY	BODY	MODEL	DESCRIPTION
1	3575 333	3			GROMMET, Control Rod, Frt. and Rear
2	J012 0393	1			WASHER, Flat
3	3575 354	1			SPRING, Control Rod Adjusting
4	3467 800	2			BUSHING, Torque Shaft
5	9417 098	2			WASHER, Torque Shaft Retaining, Plain
6	0905 206	1			WASHER, Torque Shaft Retaining, Spring
7	J400 4295	1			PIN, Rod or Swivel To T/Shaft Lever
8	6028 114	1			NUT, Bracket Mtg. Lock 7/16-14
9	0391 888	1			WASHER, Spring
10	0181 082	1			SCREW, 5/16-18 x 1/2"
11	5207 7802	1			BRACKET, Torque Shaft, Frame End
12		2			SCREW, Ext. Brkt. (Not Serviced)
13	6032 475	1			RETAINER, Torque Shaft, Spring
14	4443 412	1			CLAMP PACKAGE, w/Screw, Control Rod Swivel ***
15	3575 334	1			SWIVEL, Control Rod Clamp ***
16	5207 7803	1			BRACKET, Torque Shaft Mtg., Trans. End
17	5207 8224	1			ROD ASSEMBLY, G/Shift Control, Front ***
18	5207 9030	1			TORQUE SHAFT, All Engines, Silver ***
19	5207 7621	1			ROD, G/Shift Control, Rear



**MODEL CODES:**  
 N1 = MID SIZE PICK-UP (4x2)  
 N1.2,3 = VANS AND WAGONS (4x2)  
 R1,2,3 = (T300) CONVENTIONAL TRUCK (4x2)  
 N5 = MID SIZE PICK-UP (4x4)  
 R6,7,8 = (T300) CONVENTIONAL TRUCK (4x4)

**BODY STYLE & WHEELBASE:**  
 VANS  
 (11) = 109" W.B. (51) = 109" W.B.  
 (12) = 127" W.B. (52) = 127" W.B.  
 (13) = 127X" W.B. (53) = 127X" W.B.  
 WAGONS  
 (61) = 118.7" W.B. (31) = 130.9" W.B. (Club Cab)  
 (62) = 134.7" W.B. (61) = 111.9" W.B.  
 (63) = 138.7" W.B. (Cab & Chassis) (62) = 123.9" W.B.  
 (64) = 162.7" W.B. (Cab & Chassis) (31) = 138.7" W.B. (Club Cab)  
 (32) = 154.7" W.B. (Club Cab)

**CONVENTIONAL-BR**  
 (31) = 130.9" W.B. (Club Cab)  
 (61) = 111.9" W.B.  
 (62) = 123.9" W.B.

**N-TRUCK**  
 (31) = 130.9" W.B. (Club Cab)  
 (61) = 111.9" W.B.  
 (62) = 123.9" W.B.

94-331 1250

AR = Use as Required - = Non Illustrated Part P.A.R. = Paint as Required