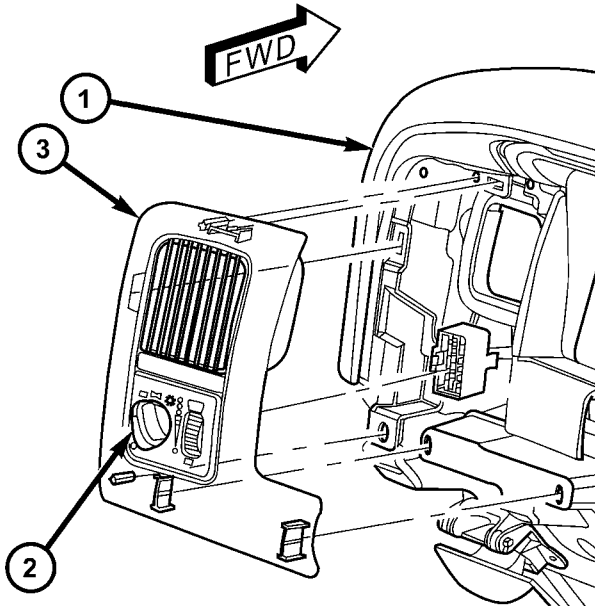


HEADLAMP SWITCH (Continued)

- (2) Remove the left instrument panel bezel. (Refer to 23 - BODY/INSTRUMENT PANEL/CLUSTER BEZEL - REMOVAL).
- (3) Disconnect the harness connector.
- (4) Remove the screws that secure the headlamp switch to the instrument panel bezel (Fig. 10).



80d128b4

Fig. 10 Headlamp Switch Removal

- 1 - DASH BOARD
- 2 - HEADLAMP SWITCH
- 3 - INSTRUMENT PANEL BEZEL

- (5) Remove the headlamp switch from the instrument panel bezel.

INSTALLATION

WARNING: ON VEHICLES EQUIPPED WITH AIRBAGS, DISABLE THE AIRBAG SYSTEM BEFORE ATTEMPTING ANY STEERING WHEEL, STEERING COLUMN, OR INSTRUMENT PANEL COMPONENT DIAGNOSIS OR SERVICE. DISCONNECT AND ISOLATE THE BATTERY NEGATIVE (GROUND) CABLE, THEN WAIT TWO MINUTES FOR THE AIRBAG SYSTEM CAPACITOR TO DISCHARGE BEFORE PERFORMING FURTHER DIAGNOSIS OR SERVICE. THIS IS THE ONLY SURE WAY TO DISABLE THE AIRBAG SYSTEM. FAILURE TO TAKE THE PROPER PRECAUTIONS COULD RESULT IN ACCIDENTAL AIRBAG DEPLOYMENT AND POSSIBLE PERSONAL INJURY.

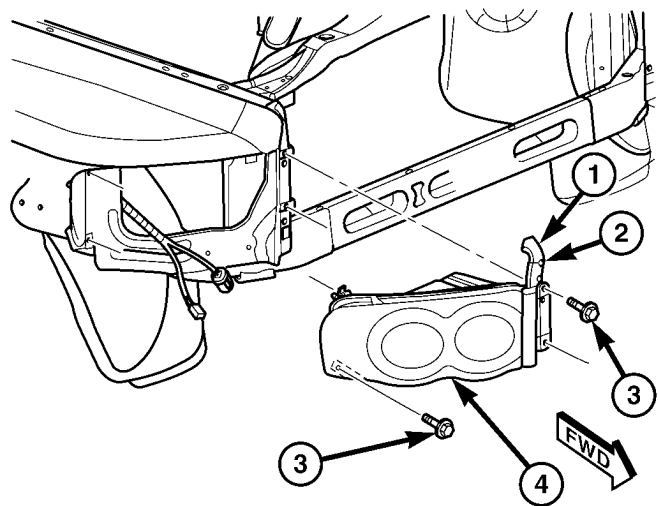
- (1) Position the headlamp switch to the left instrument panel bezel and secure with screws. Tighten the screws to 2.2 N·m (20 in. lbs.).

- (2) Reconnect the instrument panel wire harness connector for the headlamp switch.
- (3) Position the left instrument panel bezel on to the instrument panel.
- (4) Install the cluster bezel onto the instrument panel (Fig. 10).
- (5) Connect the battery negative cable.

HEADLAMP UNIT

REMOVAL

- (1) Disconnect and isolate the battery negative cable.
- (2) Remove the push pins attaching the seal to the fender.
- (3) Remove the bolts attaching the headlamp unit to the fender (Fig. 11).
- (4) Remove the bulb sockets from the headlamp unit
- (5) Separate headlamp unit from vehicle.



80d08ad2

Fig. 11 Headlamp - Typical

- 1 - SEAL
- 2 - PUSH PIN
- 3 - SCREW
- 4 - HEADLAMP UNIT

INSTALLATION

CAUTION: Do not touch the bulb glass with fingers or other oily surfaces. Reduced bulb life will result.

- (1) Install the bulb sockets for the front park/turn signal and headlamp.
- (2) Position headlamp unit in inner fender panel.